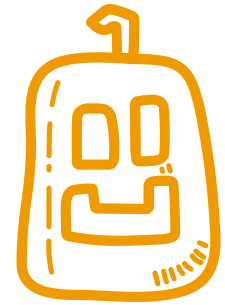
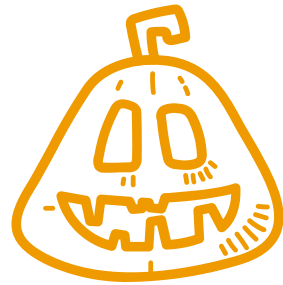
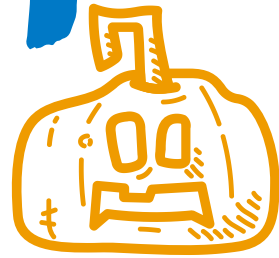


Pumpkin Carving Contest



Name: _____

Teacher: _____

Grade: _____

FALL FEST
RETURNS ON FRIDAY
OCTOBER 29TH
5:30 - 8:30PM

Contest Categories: SCARIEST, FUNNIEST, and MOST ORIGINAL

Carved pumpkins are due at school between 2:00 and 4:15pm on Friday 10/29

Contest judging begins at 4:30pm sharp!

This form must accompany each pumpkin, so we can deliver awards